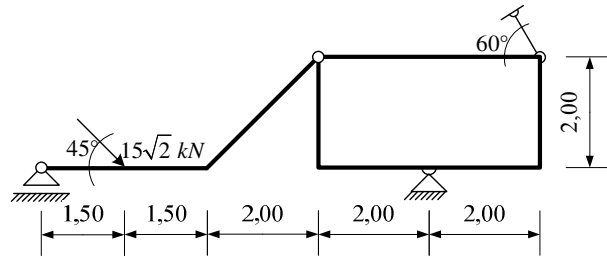
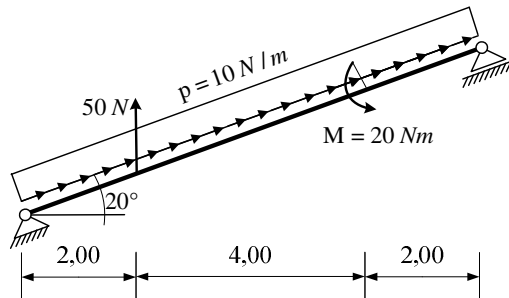


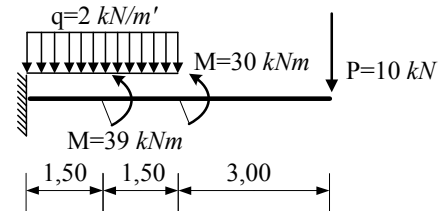
1. Za zadani ravninski sustav odrediti sile u spojevima grafičkim postupkom.



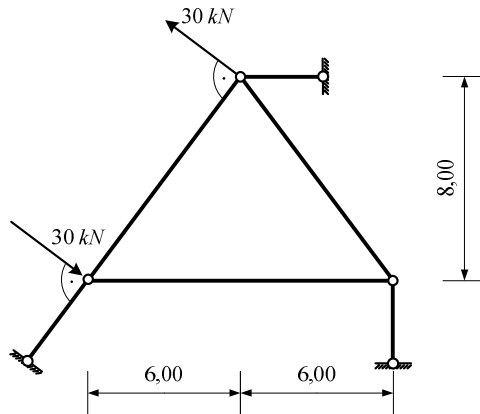
2. Za ravninski štapni sustav računski odrediti podatke te prikazati M, T i N dijagrame.



3. Za zadanu konzolu računski odrediti podatke te prikazati M i T dijagrame.



4. Odrediti sile u svim štapovima zadanog ravninskog sustava.



5. Odrediti sile u spojevima zadanog ravninskog sustava.

