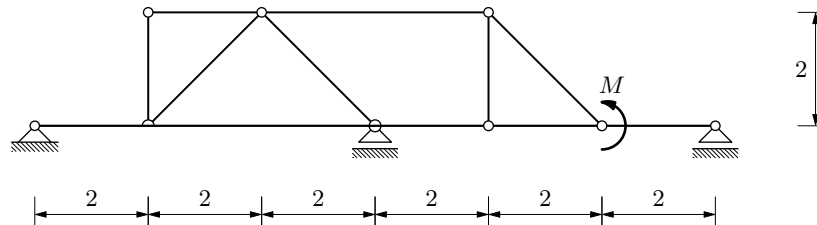


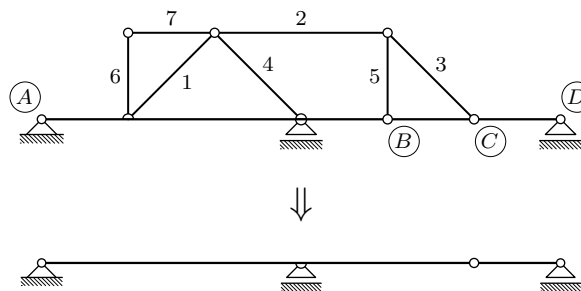
Ojačani Gerberov nosač – superpozicijski postupak

Nacrtajte dijagram momenata savijanja!

$$M = 125 \text{ kNm (neposredno desno od zgloba)}$$



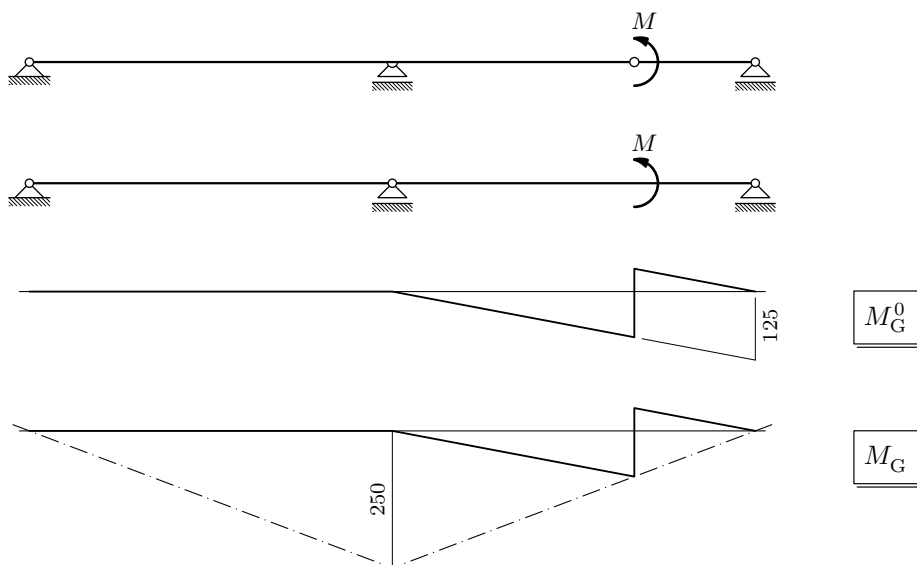
„prepoznavanje” sistema:



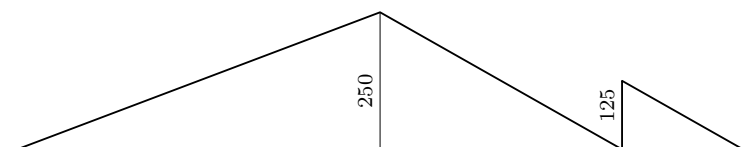
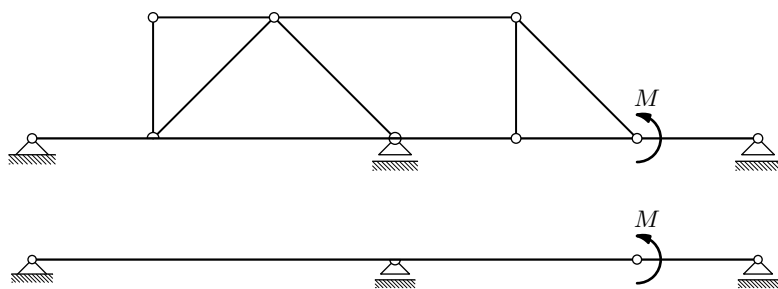
štapom 2 (ili 3) „nadoknađen” je zglob B pa poprečni presjek u tom zglobu zajedno s poprečnim presjekom štapa 2 (ili štapa 3) može, kao i „puni” poprečni presjek, osim sila preuzeti i moment, za razliku od presjeka u zglobu C koji ne može preuzeti moment

⇒ zadani se nosač u odnosu na podlogu ponaša kao Gerberov nosač

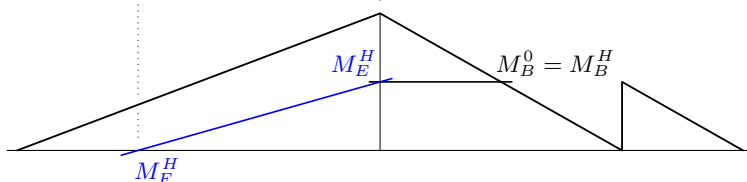
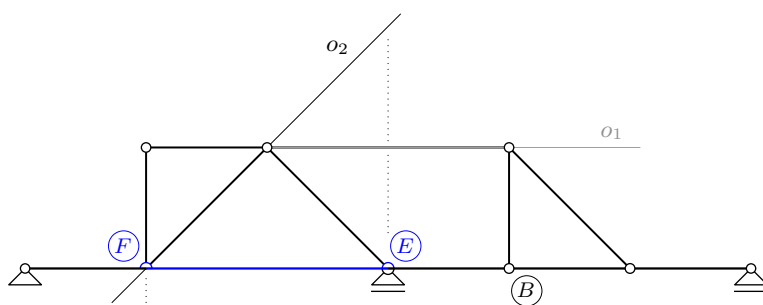
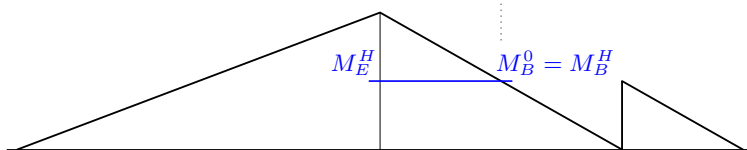
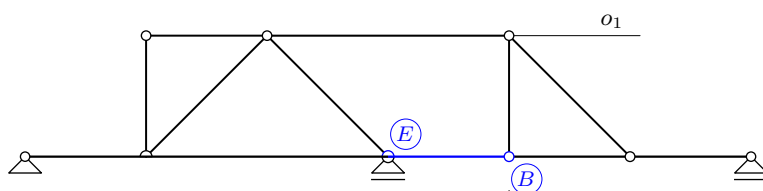
korak prvi: superpozicijski postupak na Gerberovom nosaču:



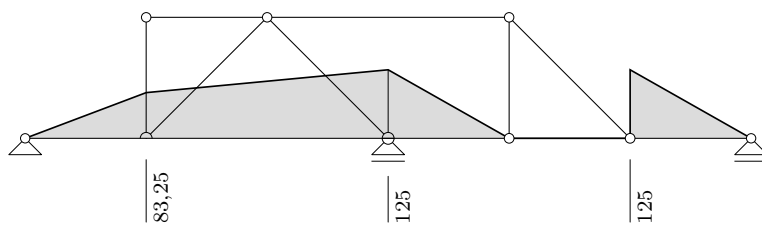
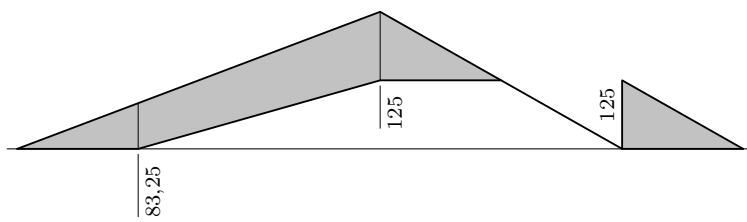
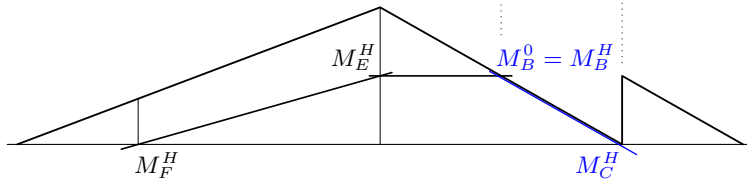
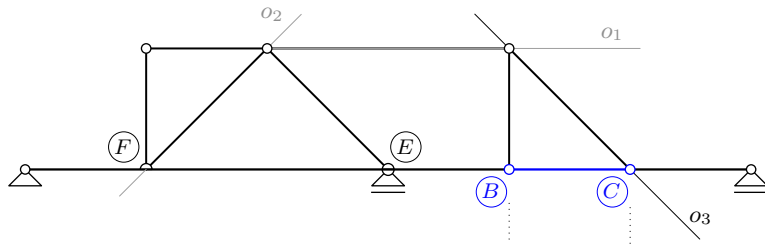
korak drugi: superpozicijski postupak na ojačanom nosaču:



M^0



(čvor u koji su priključeni štapovi 6 i 7 nije opterećen, pa su vrijednosti sila u tim štapovima jednake nuli i ne utječu na vrijednosti momenata u gredi)



M